

Find a tool/medium

Woodcut



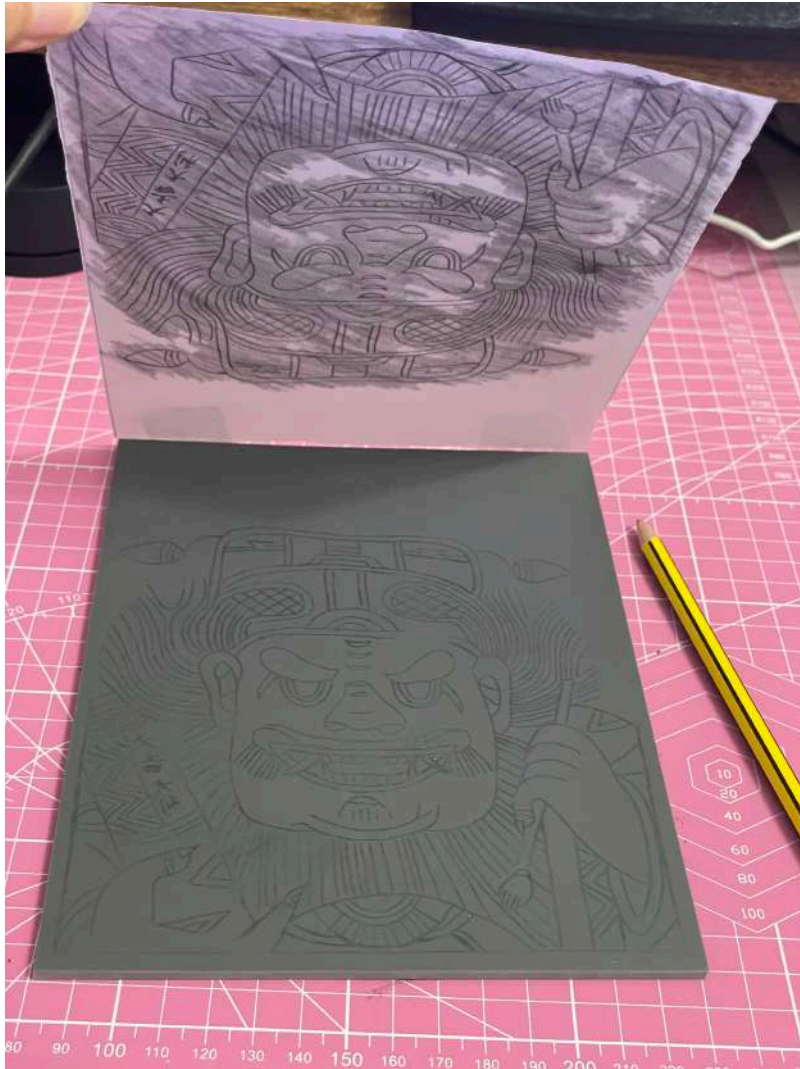
Chinese New Year woodcut picture



*Big Kuitou
Zhuxian Town New Year Woodblock Print*

Process

1. Transferring the image

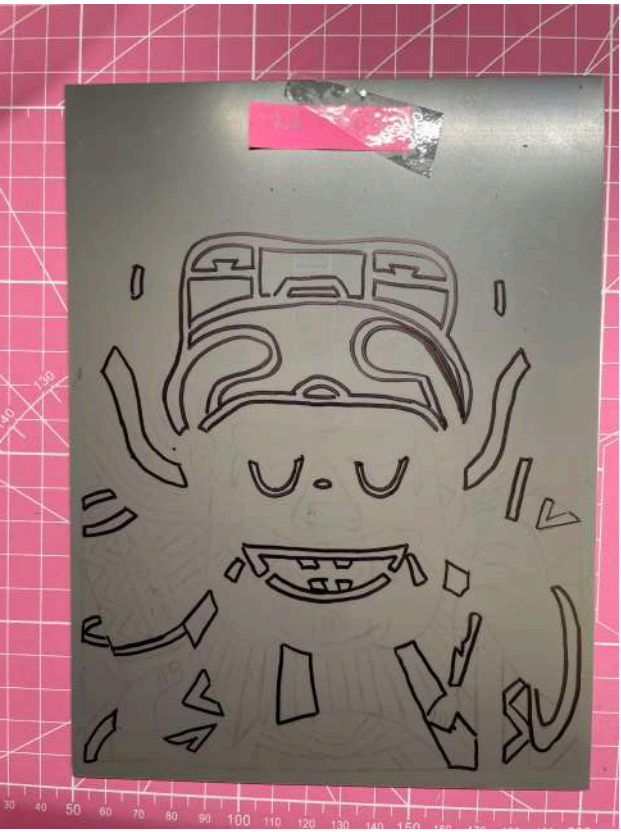


x5

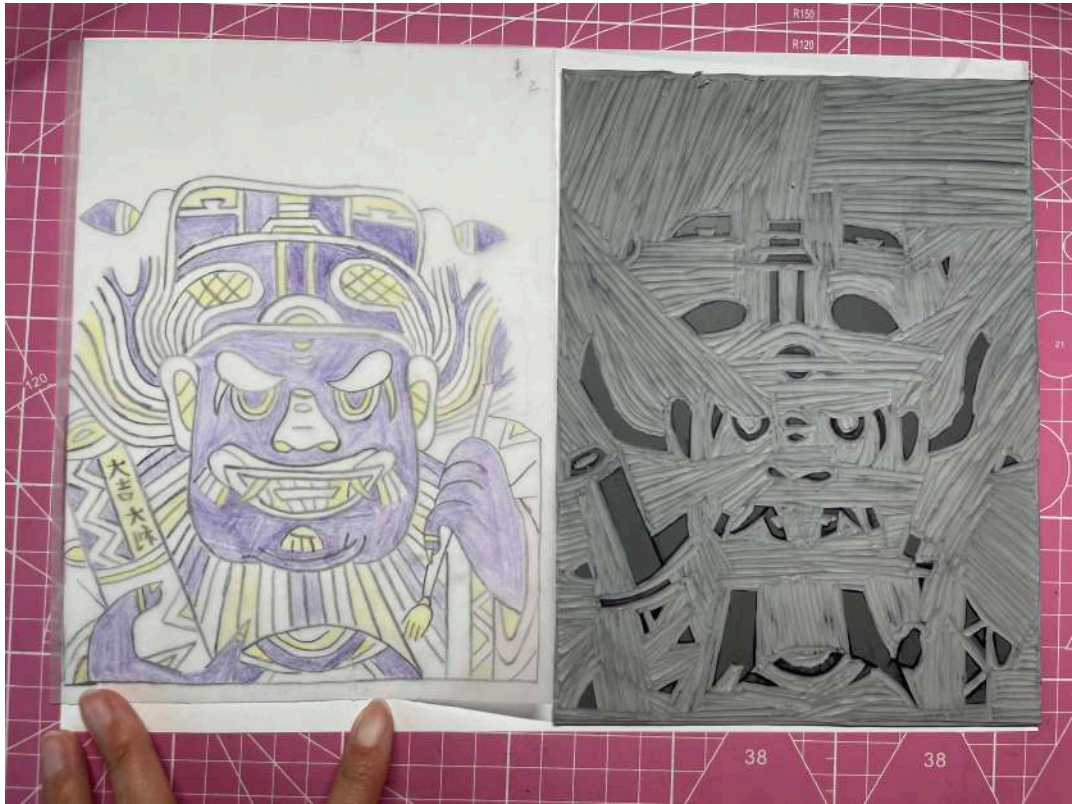
Process

2. Carving the block

Outline



Purple



Yellow



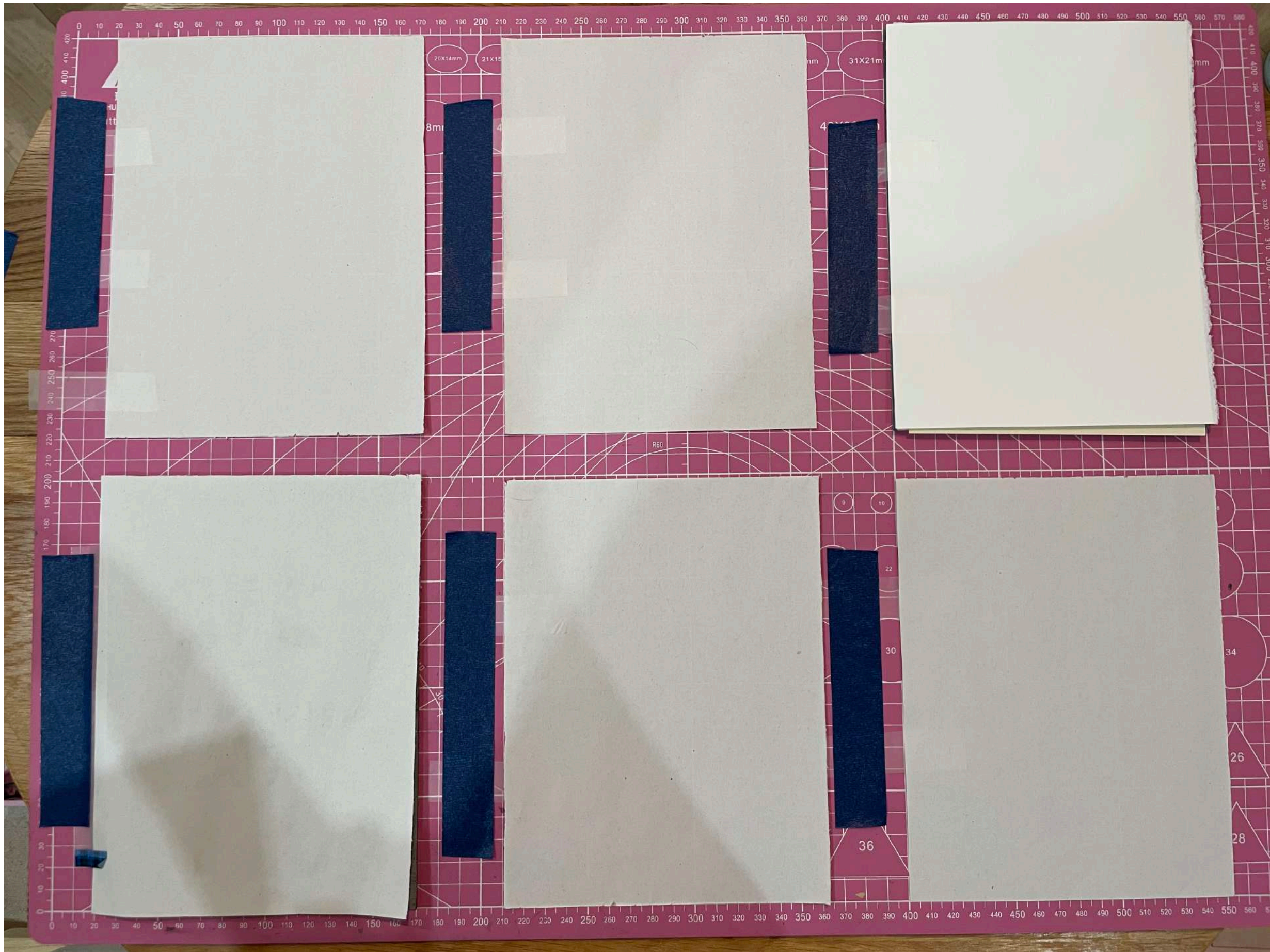
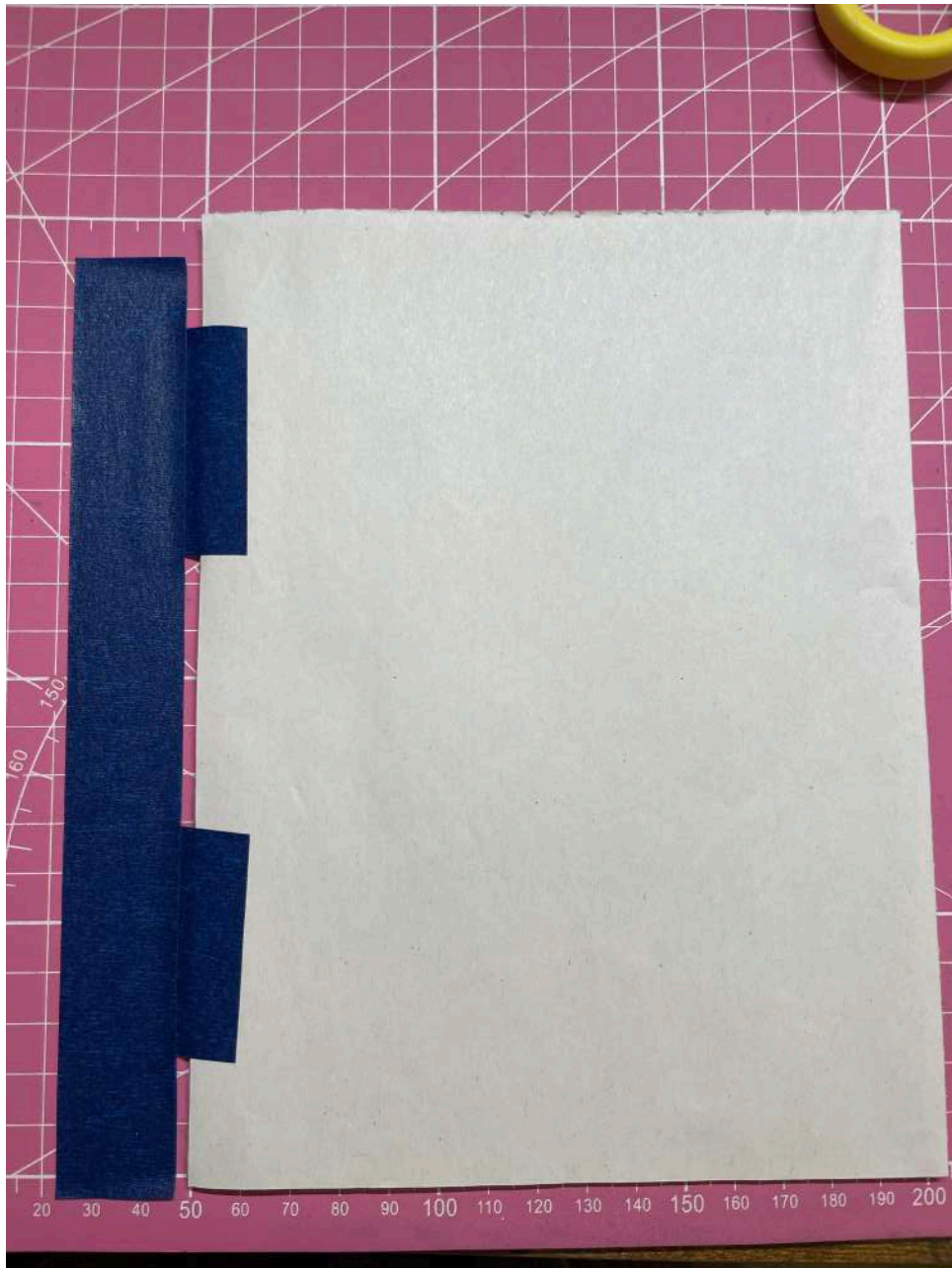
Green



Red

Process

3. Set the paper for registration



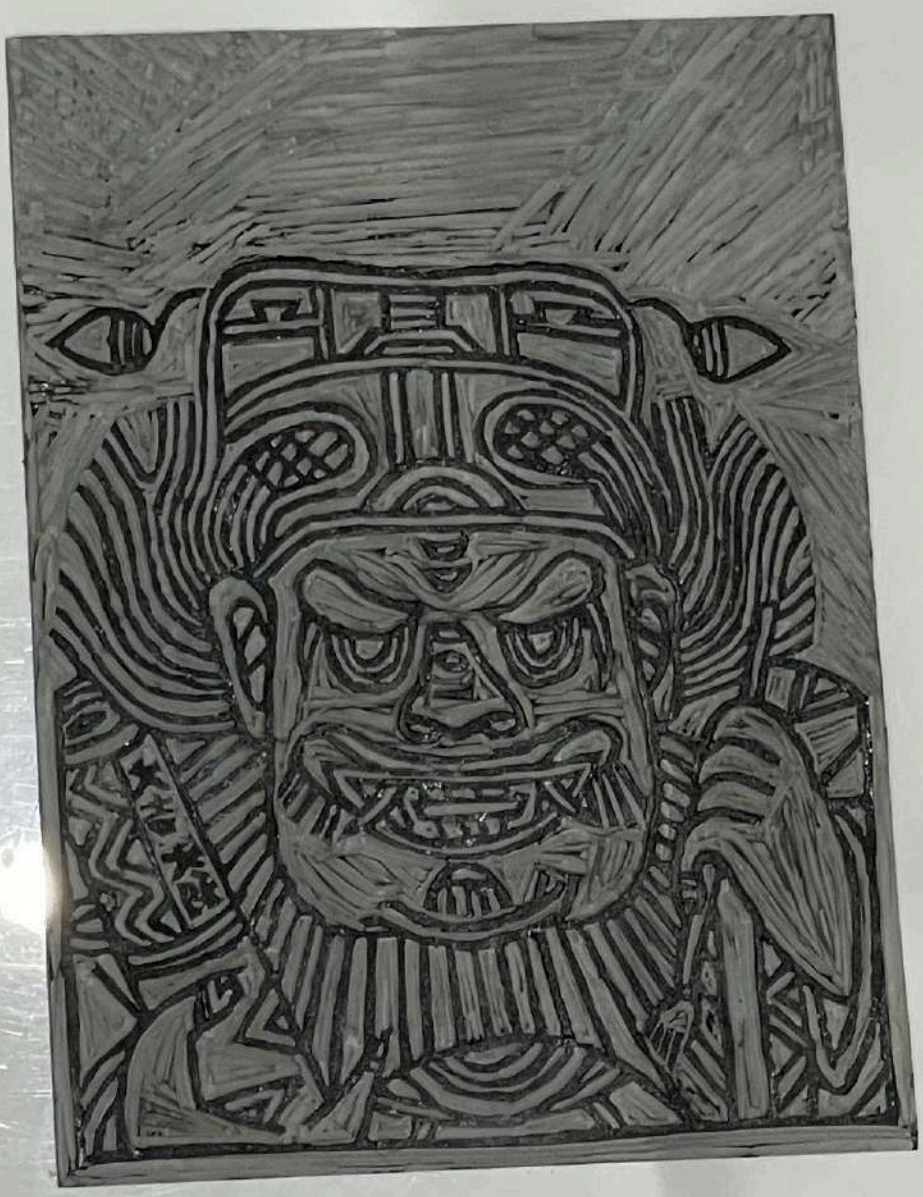
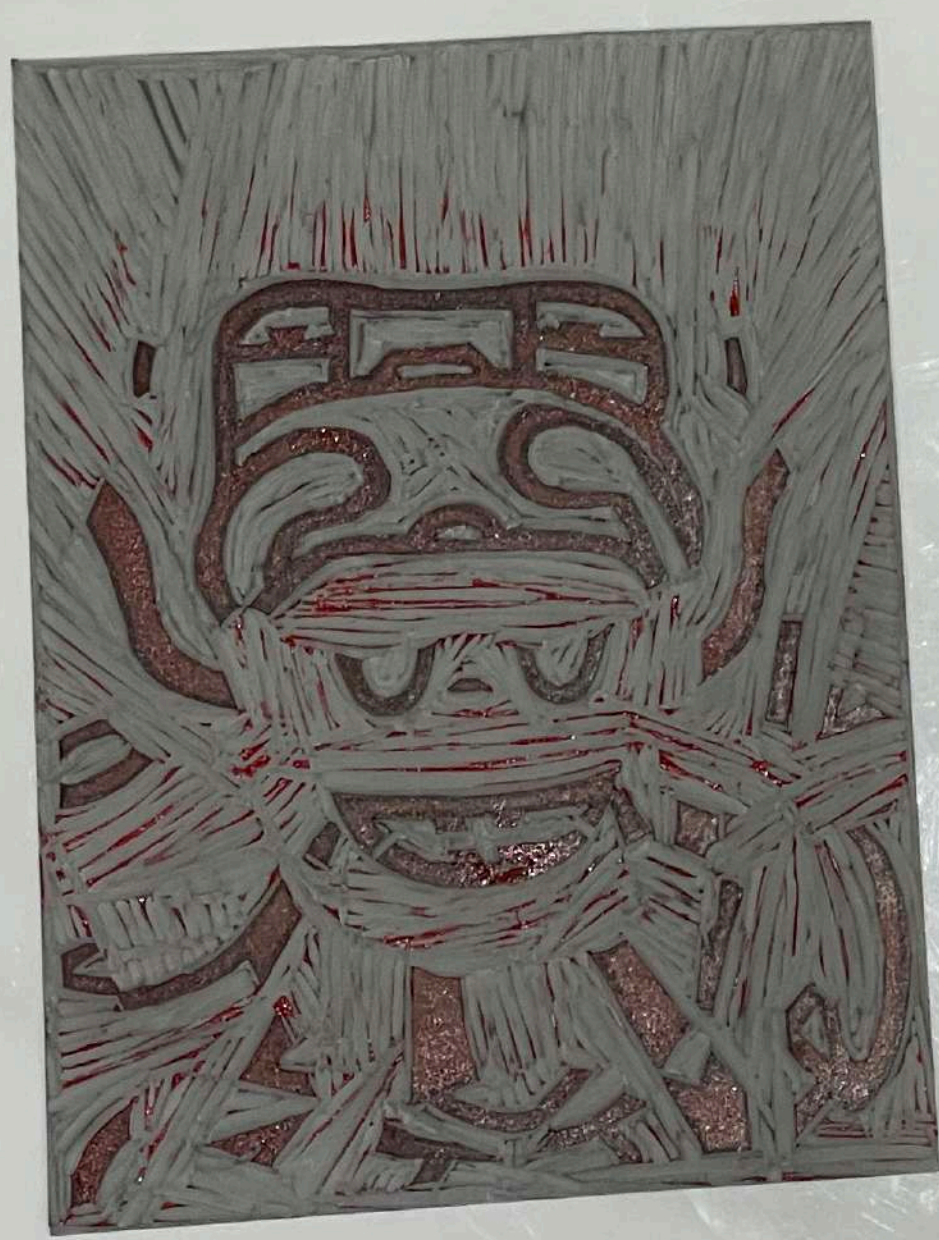
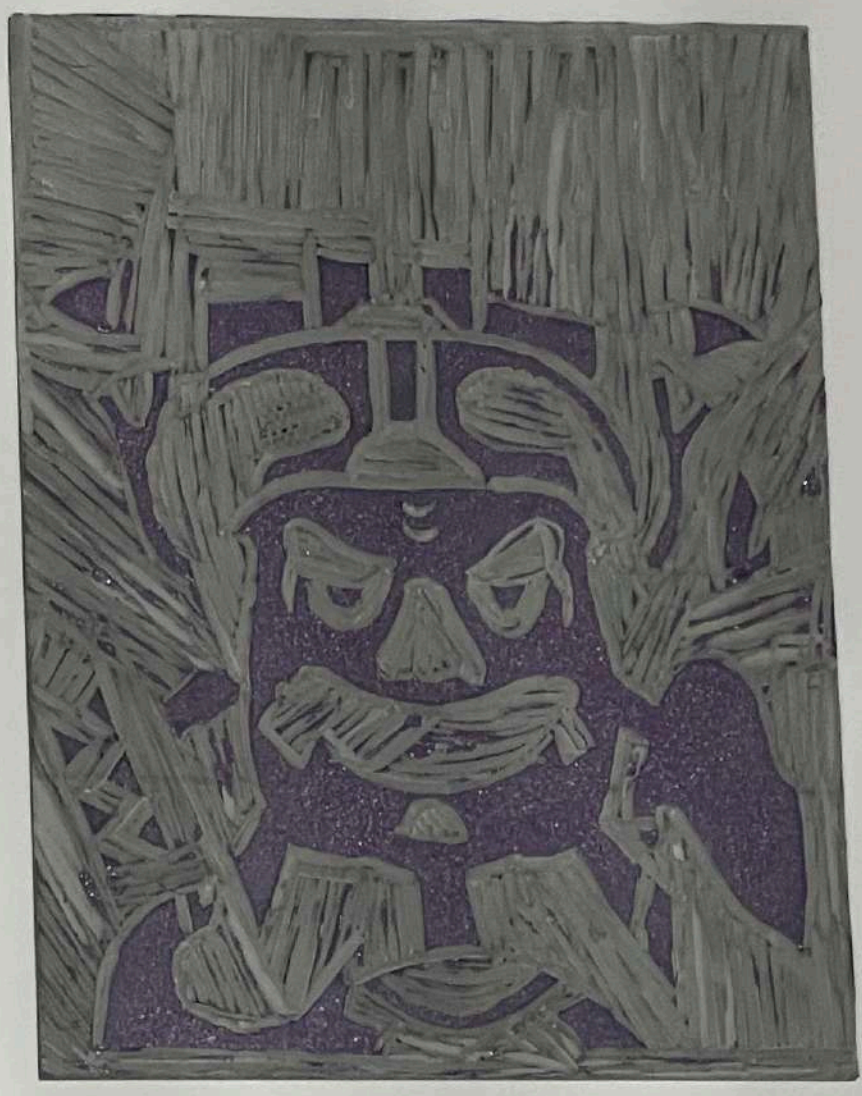
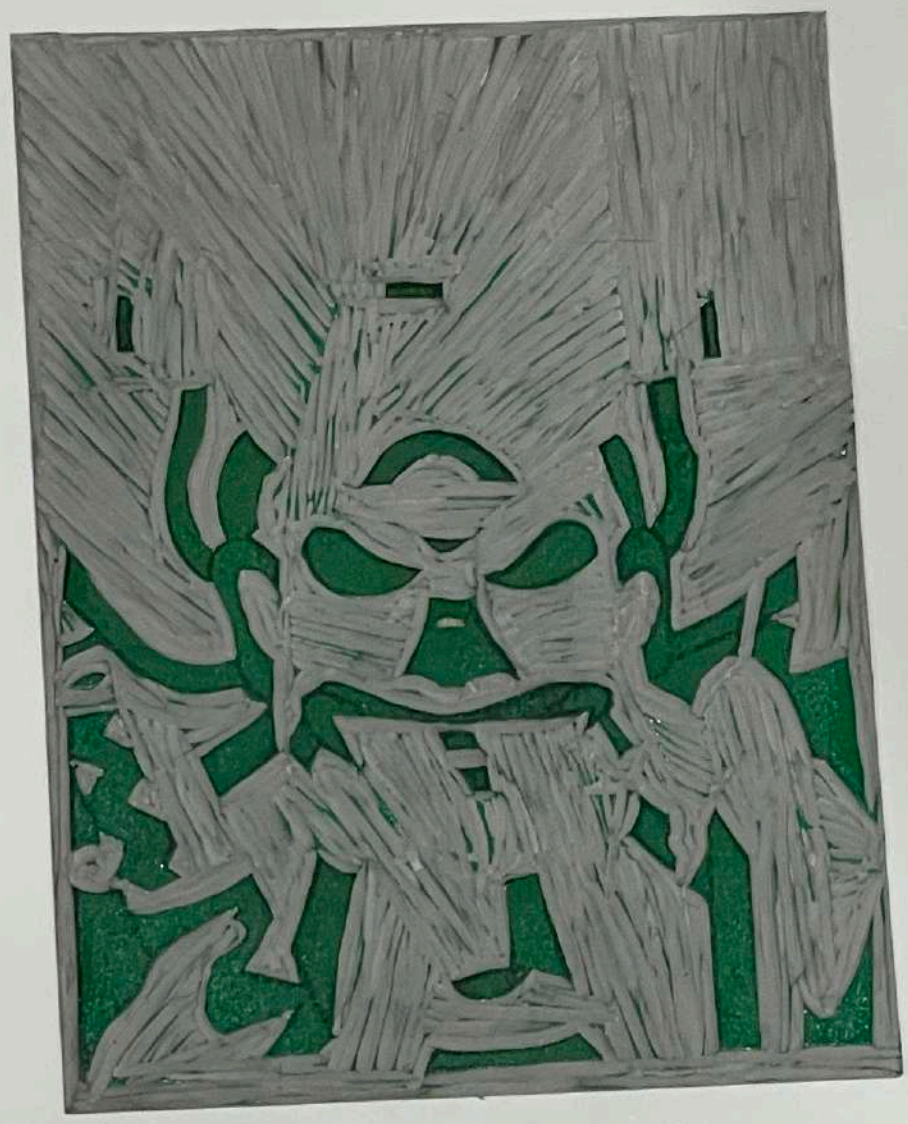
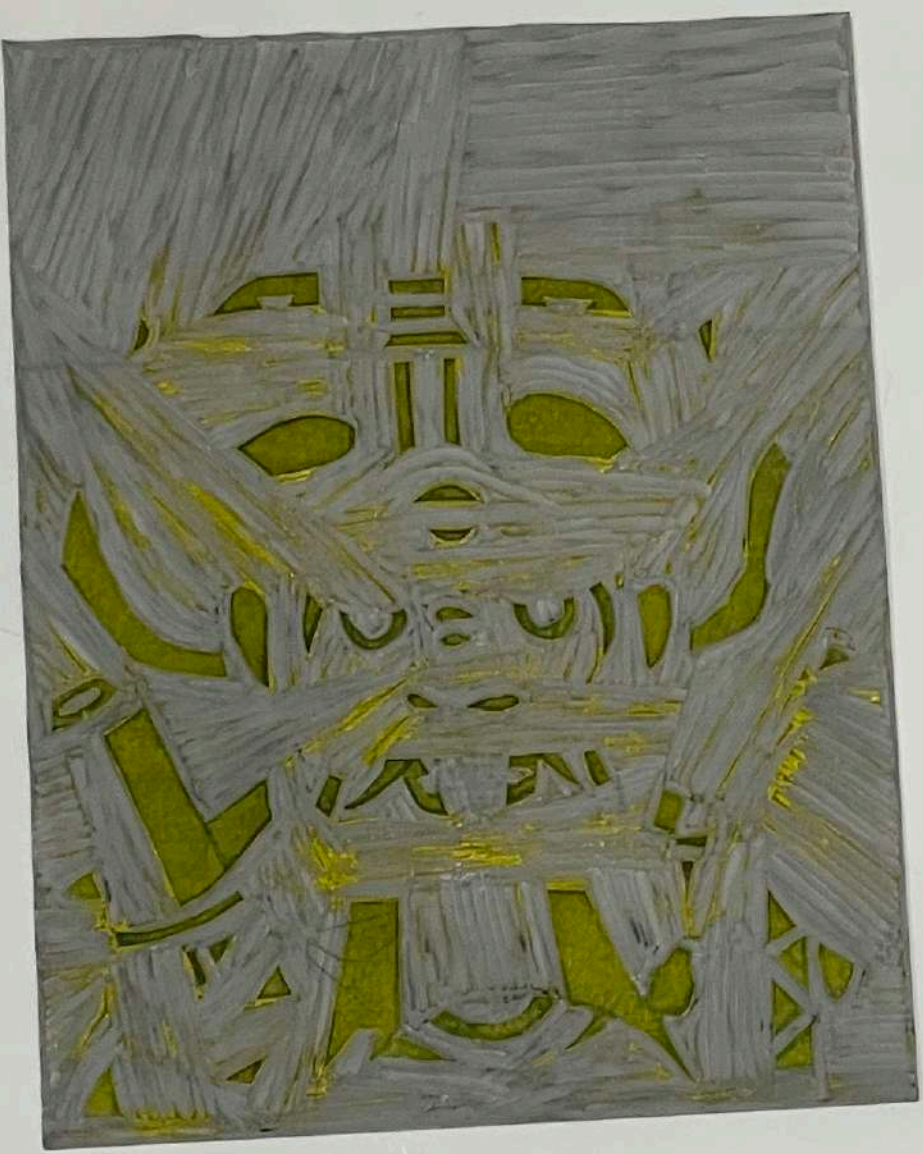
Process

4. Register, print



Outcome





Critical Examination

What's unexpected about this thing you just made?

What do you understand better or differently about your tool or medium now?

Did it pose a particular technical challenge?

What kind of output or knowledge does this tool or medium favour?

What relationship does it have to graphic or communication design?

Critical Examination

What's unexpected about this thing you just made?

Expected:

- Carving is hard
- Registration is hard

Unexpected:

- Too many details(lines are too close to each other)
- Transferring the image many times as I change the lines
- Wrong type of paint
- Unwanted extra coloured lines
- Different effect on different paper

Critical Examination

What do you understand better or differently about your tool or medium now?

1. Lino cut it is not suitable for multi colour print compared to wood cut print
2. Most people use it to create mono colour print
3. Outlines or colour blocks
4. To consider mix media when making a multi colour Lino cut
5. Suitable to create textures
6. Those unwanted extra coloured lines are unavoidable

Critical Examination

Did it pose a particular technical challenge?

Yes

Registration

Carving

Critical Examination

What kind of output or knowledge does this tool or medium favour?

Handcrafted

Folklife related

Imprecise

Bold/Rustic

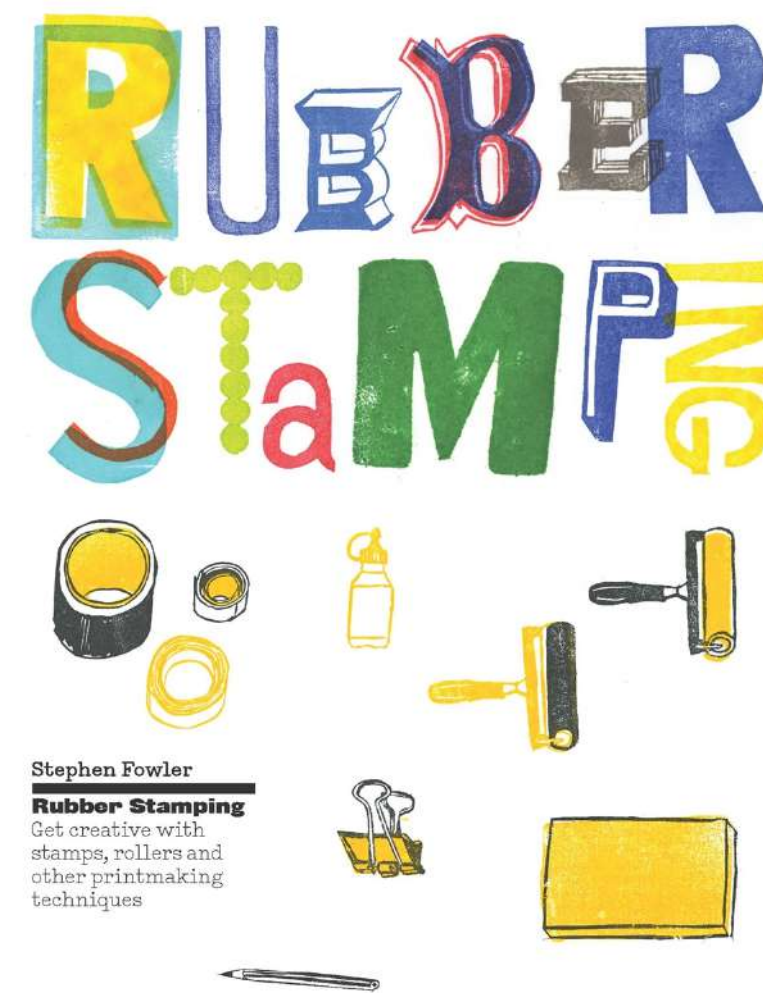
Critical Examination

What relationship does it have to graphic or communication design?

1. In between hand drawing and modern printing technologies; reproduction
2. Colour Registration
3. Aesthetic style
4. Communication: cultural storytelling

Last week, I raised 3 questions:

1. Worried to much about overprinting
2. Spent a lot of time mirroring the image and transferring it to the lino blocks
3. Cut away a large amount of negative space just to leave small coloured portions on each block, which was time-consuming and wasteful.

**How to address them:**

- Experiment with overprinting
- draw directly on the block or
- Work with images or shapes that don't require mirroring
- Use a single block to create multi-colour prints (e.g., try reduction linocut techniques)
- Design with negative space

However...

What I am really curious about was how to turn this static Lino prints into *movement*.

And

Repeat print, print with different textures or tools, collaborative printing, rubber-stamped ephemera, as so on...

Meanwhile,

What does ‘critical questions’ mean in the context of this brief?

Could it refer only to technical problems?

Was I supposed to raise deeper, more sophisticated cultural and social enquiries?

Are we supposed to have a specific design goal in mind, or does the content not matter as long as we experiment with the tool?

...

(Direction?)

(Content?)

To begin with

Consider something suitable for repetition and creating combinations into scenes:

A key - a chain of keys

A house - a row of houses

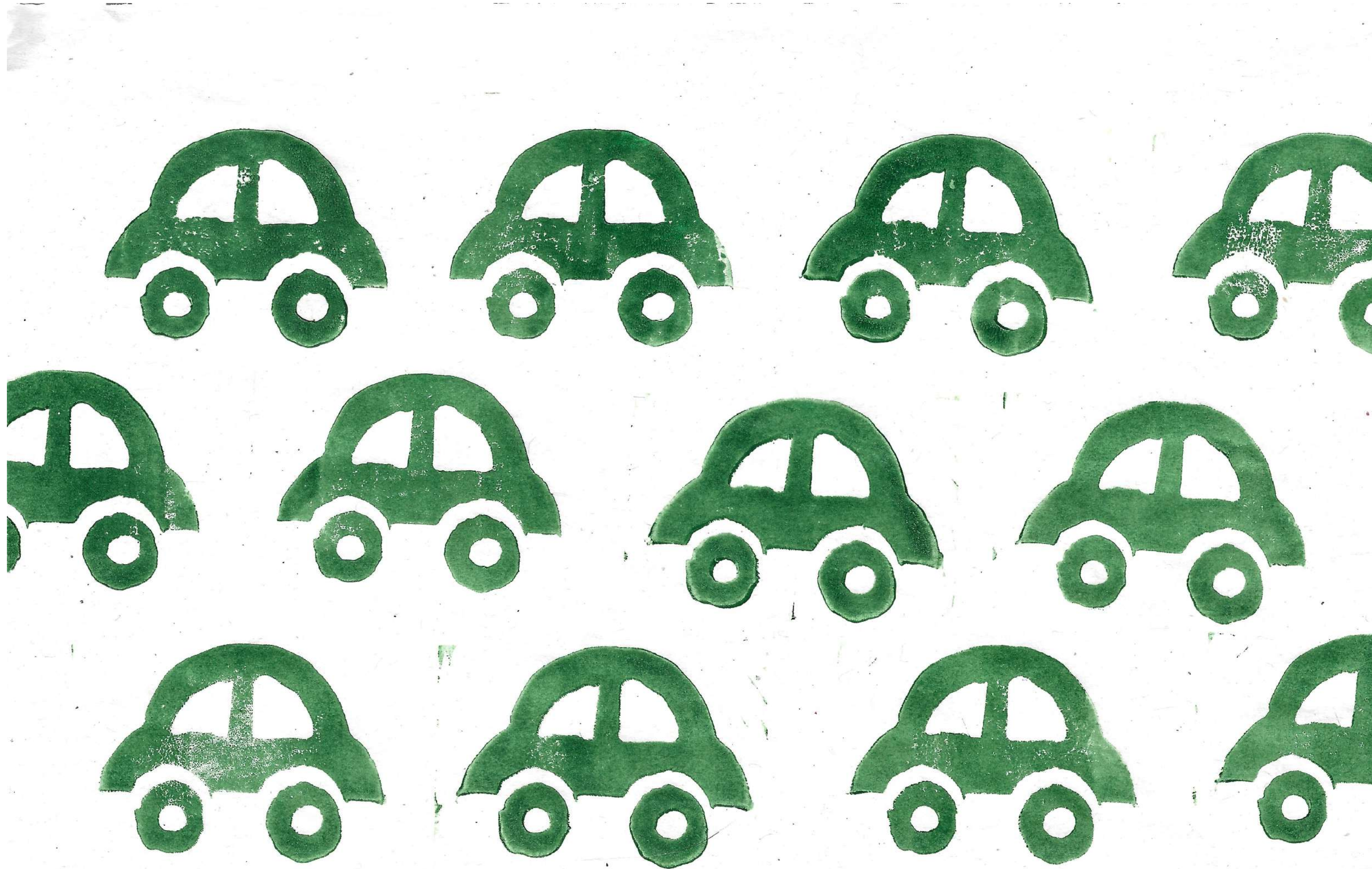
A car - traffic

A person - crowd

A fruit - a basket of fruit

A bottle of milk - a shelf of milk, and so on...

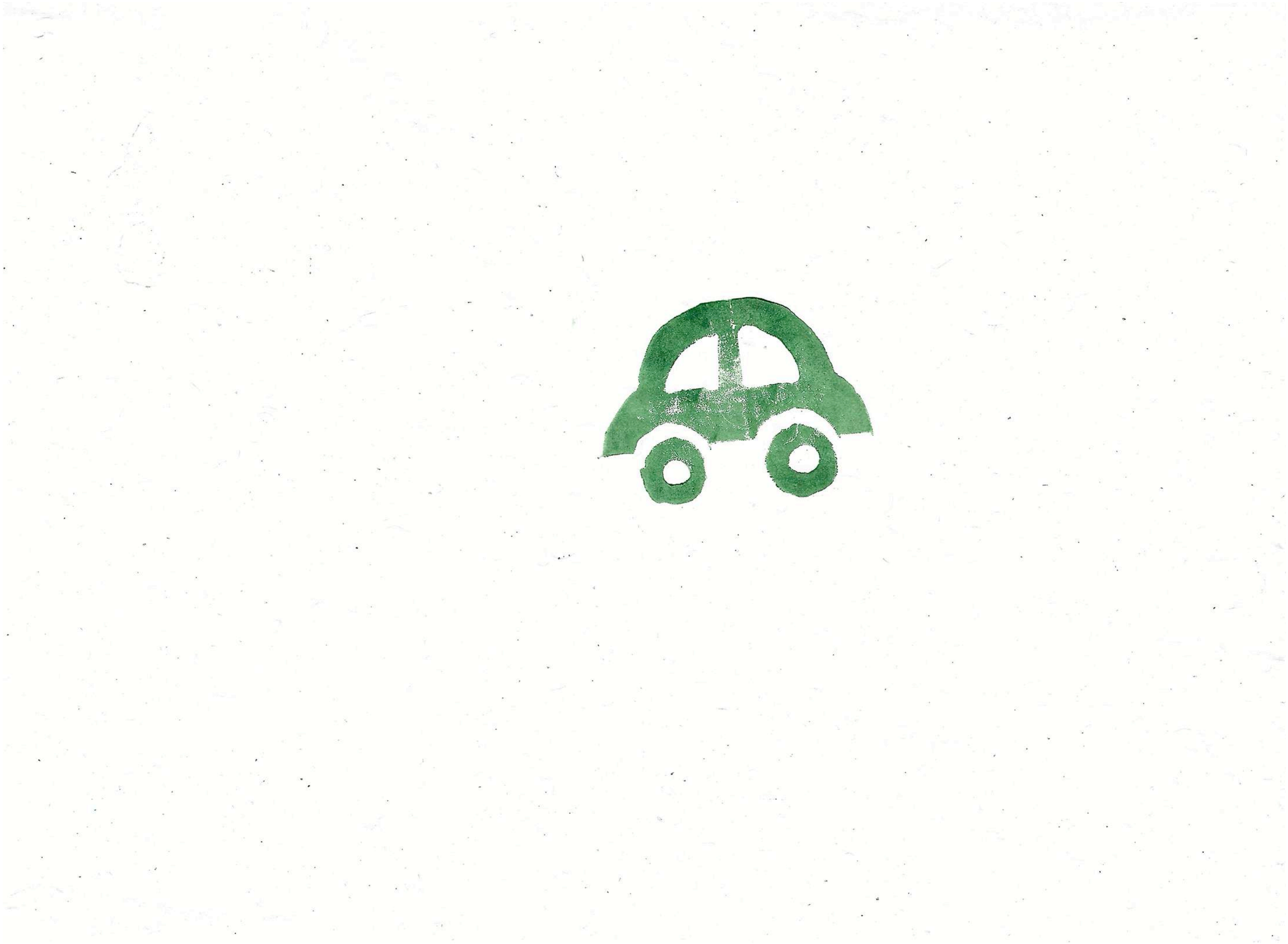


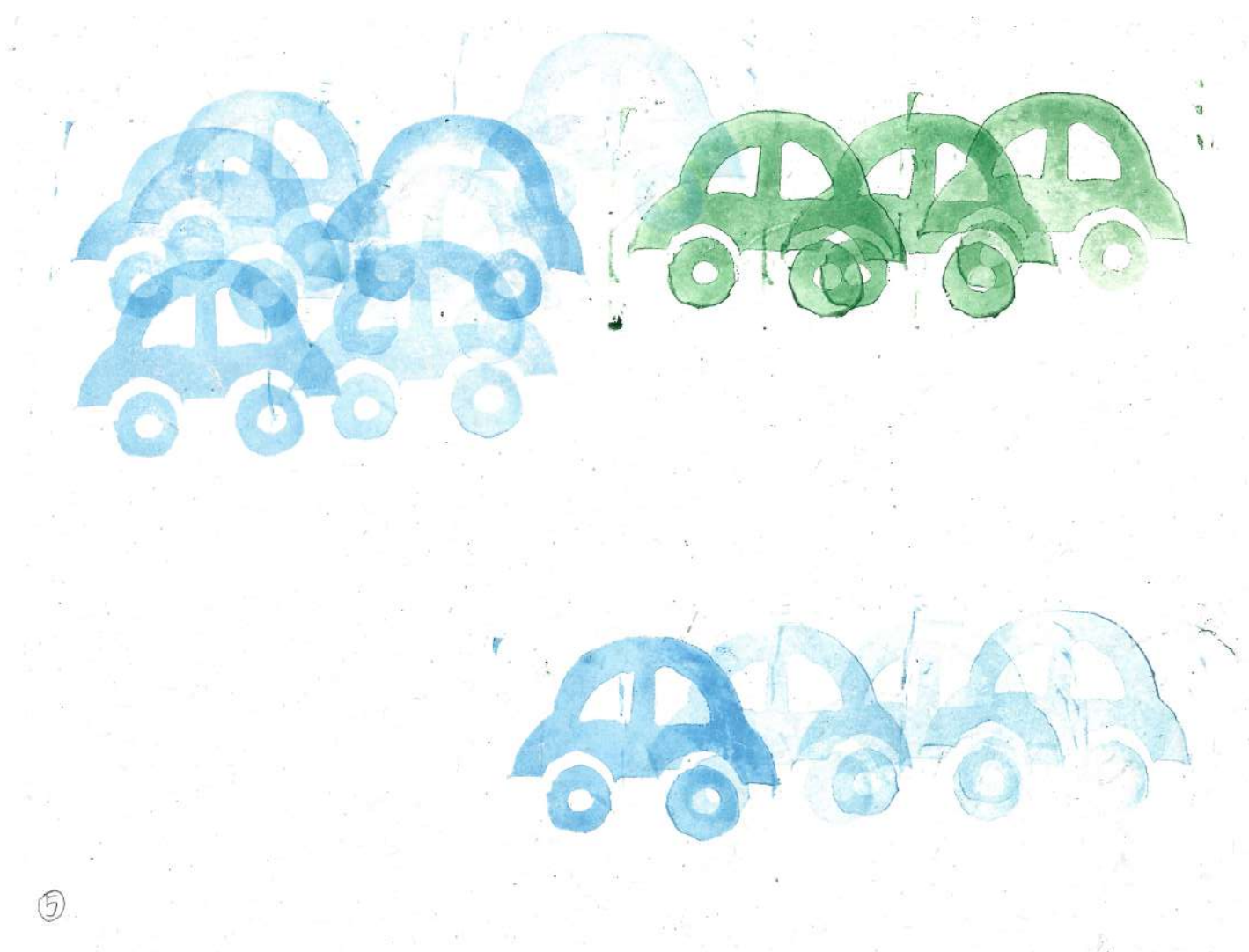
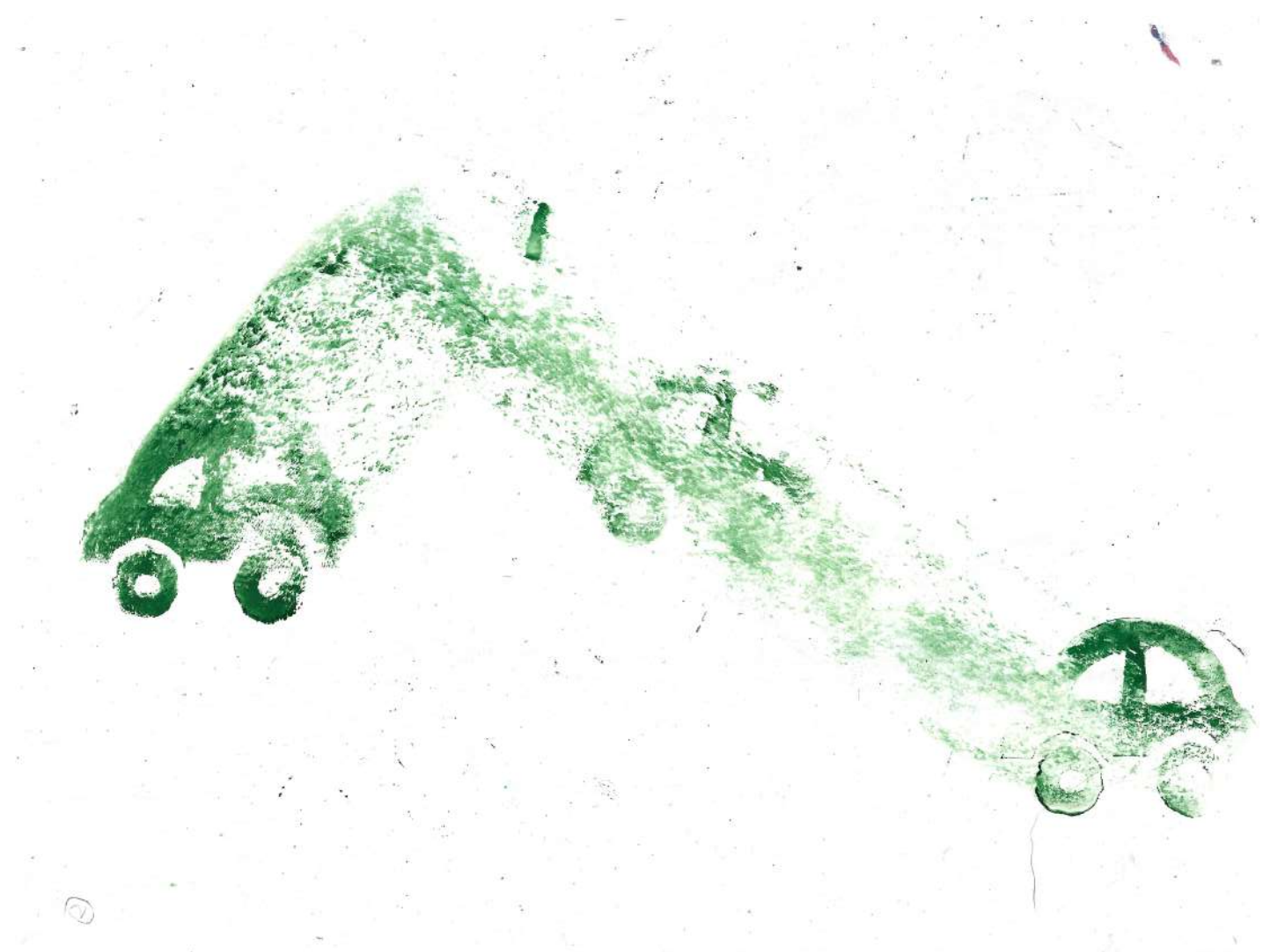
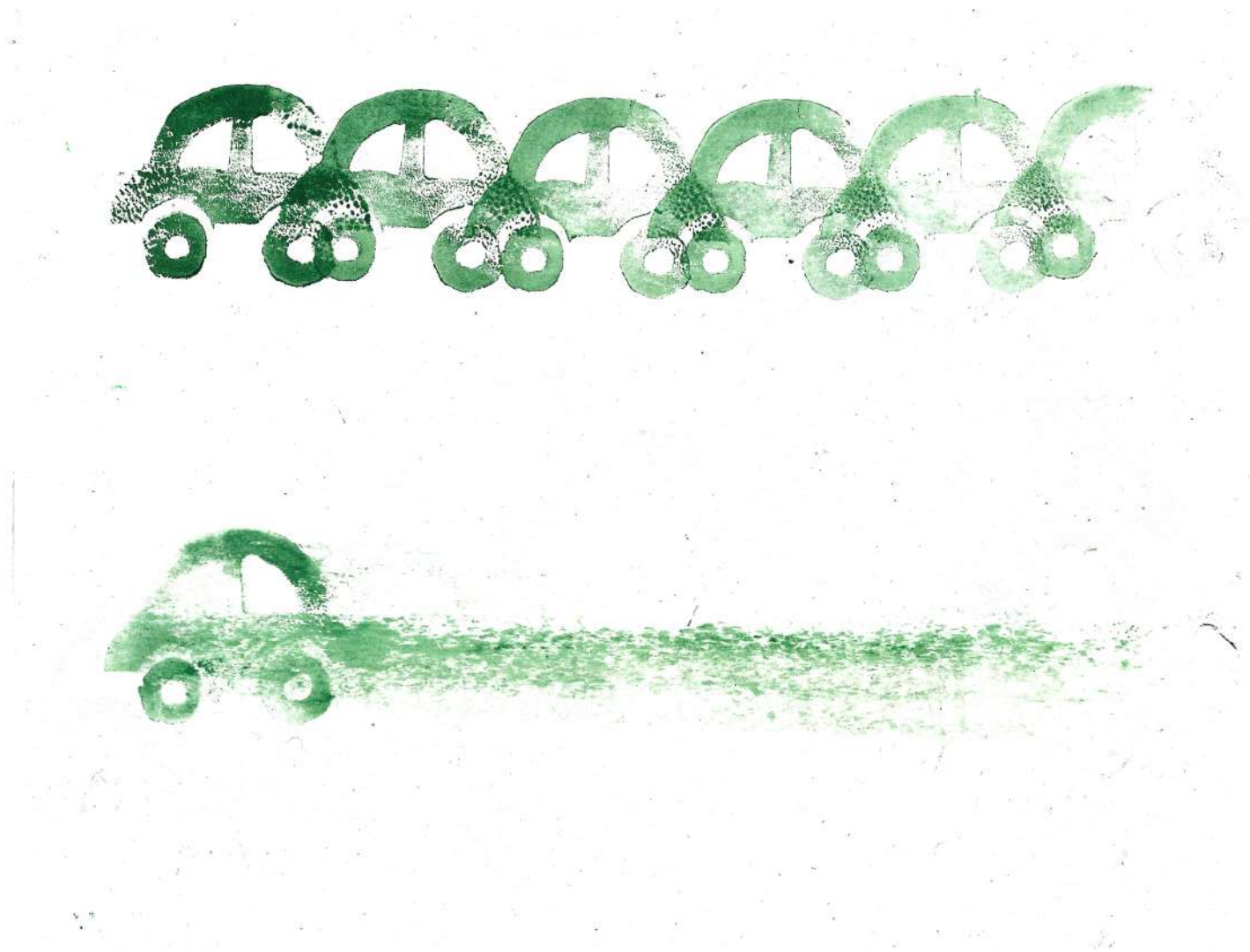
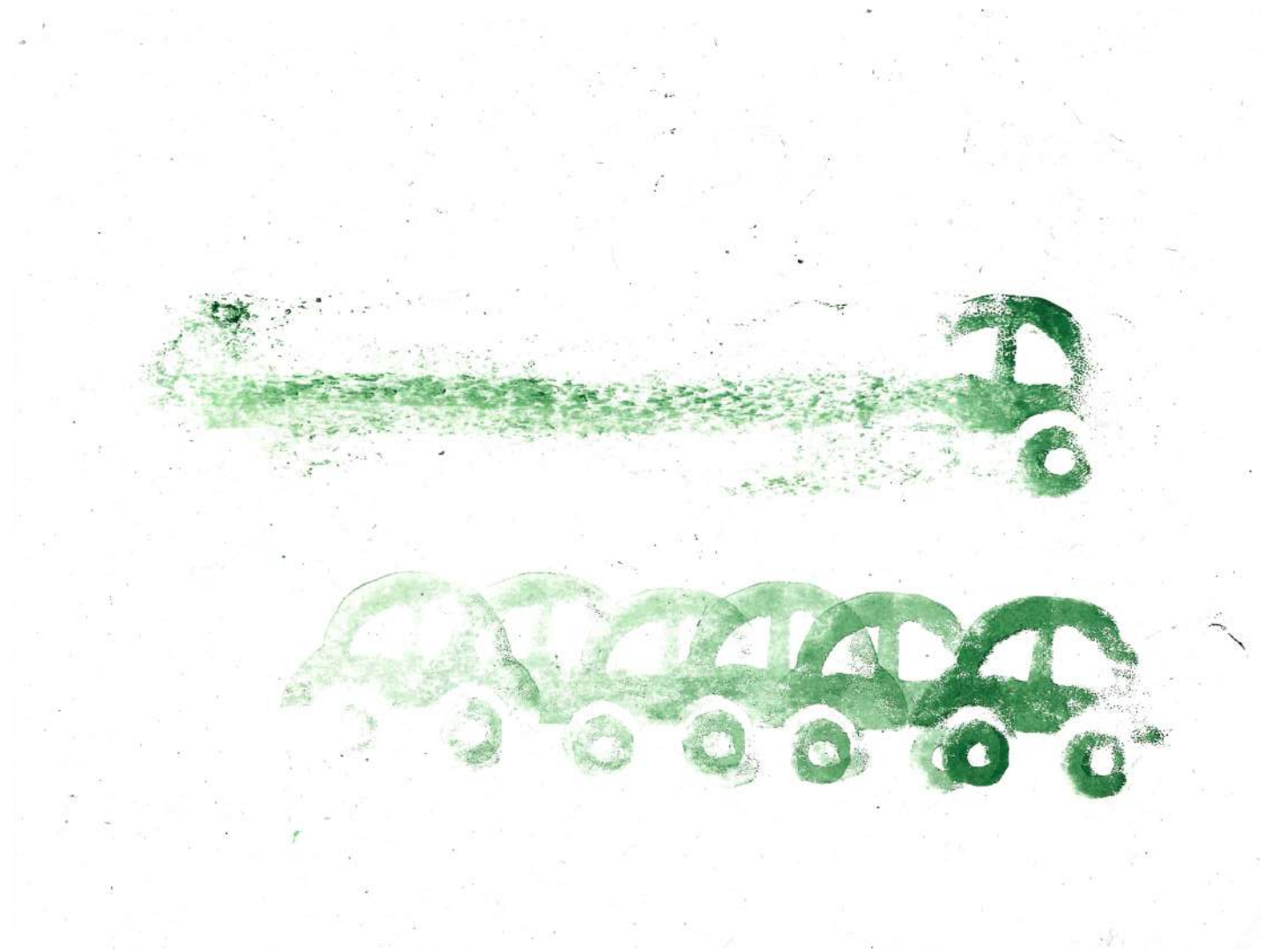


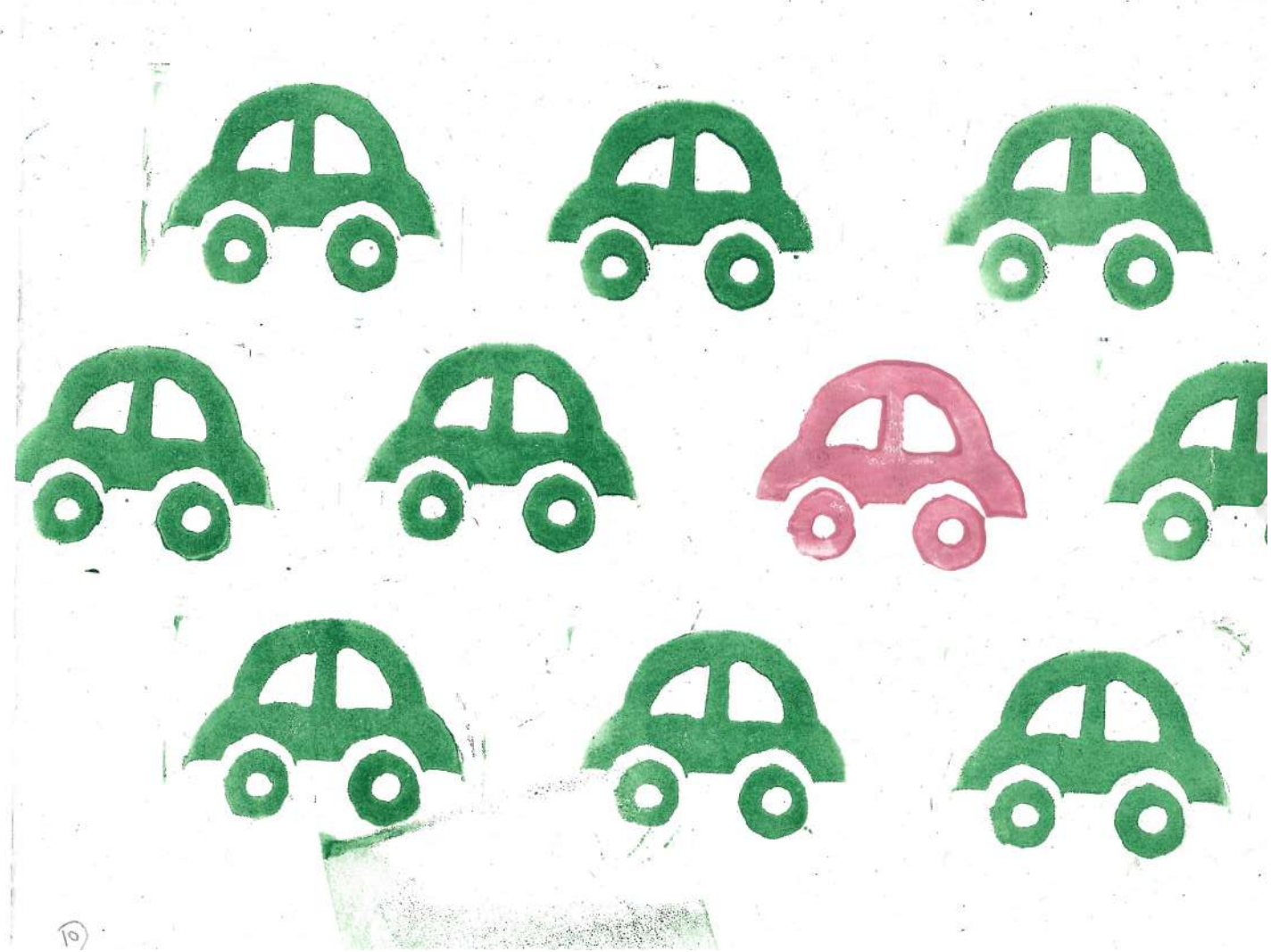
I improvised with repetition
and felt that...

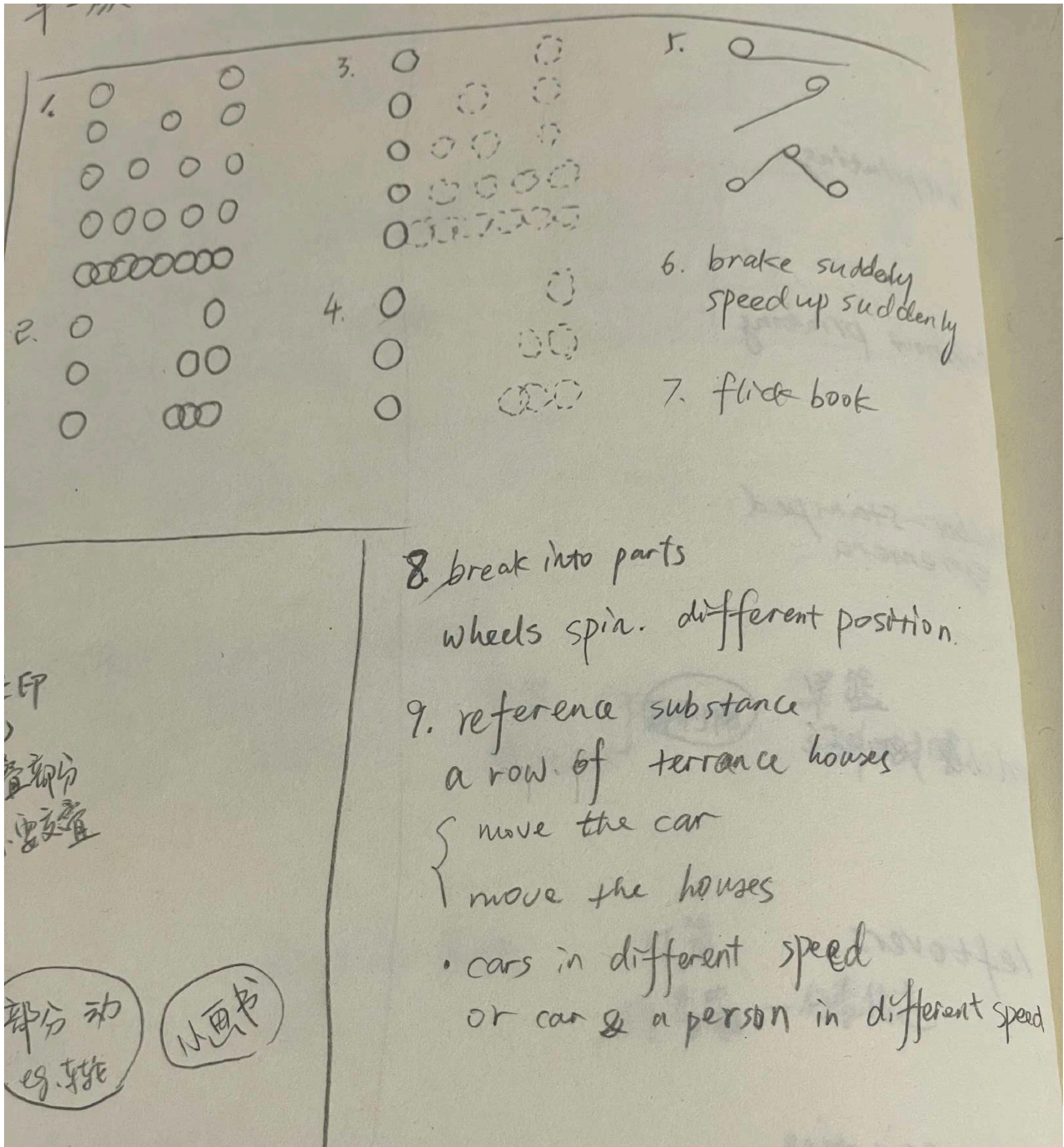


Random repeats

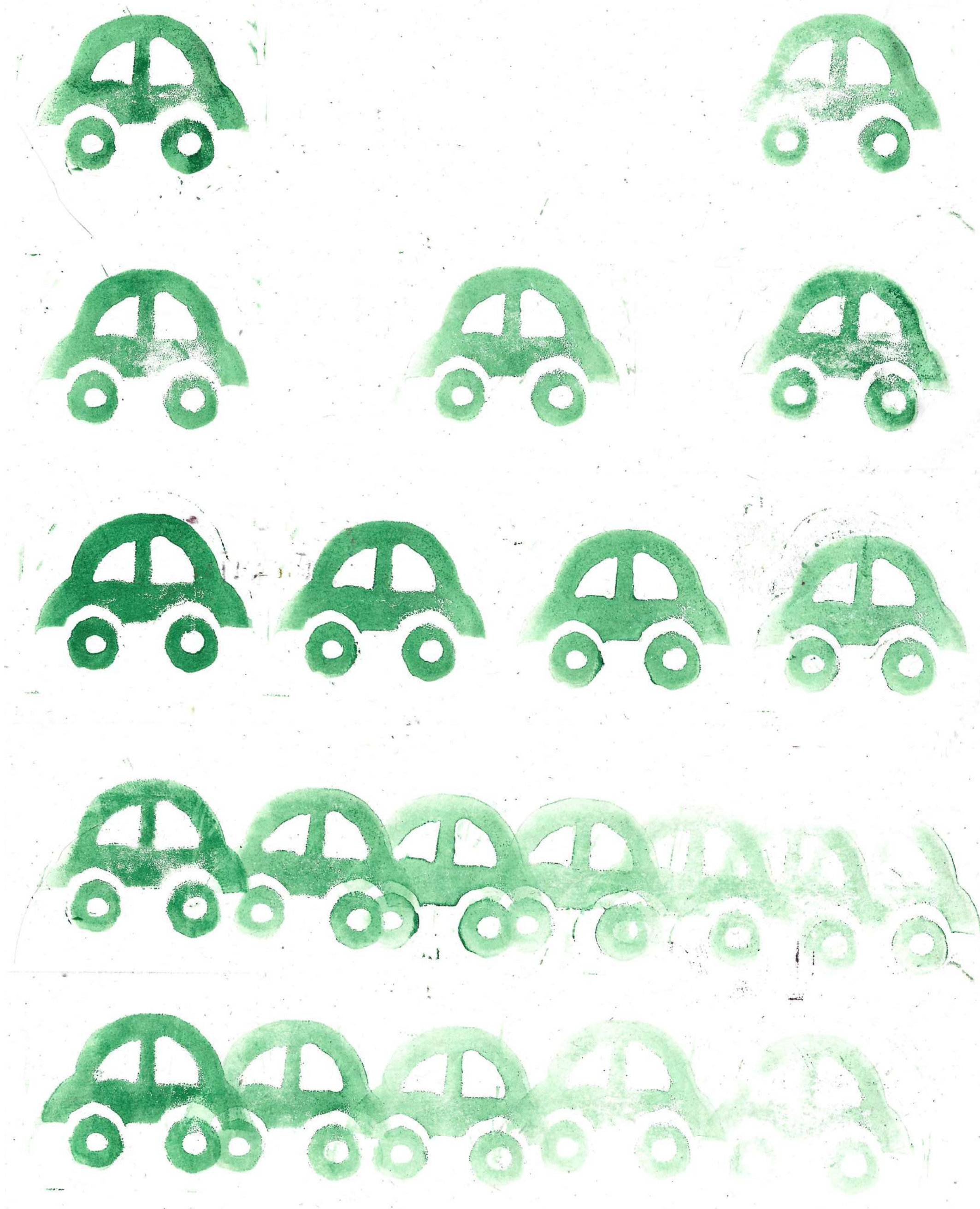
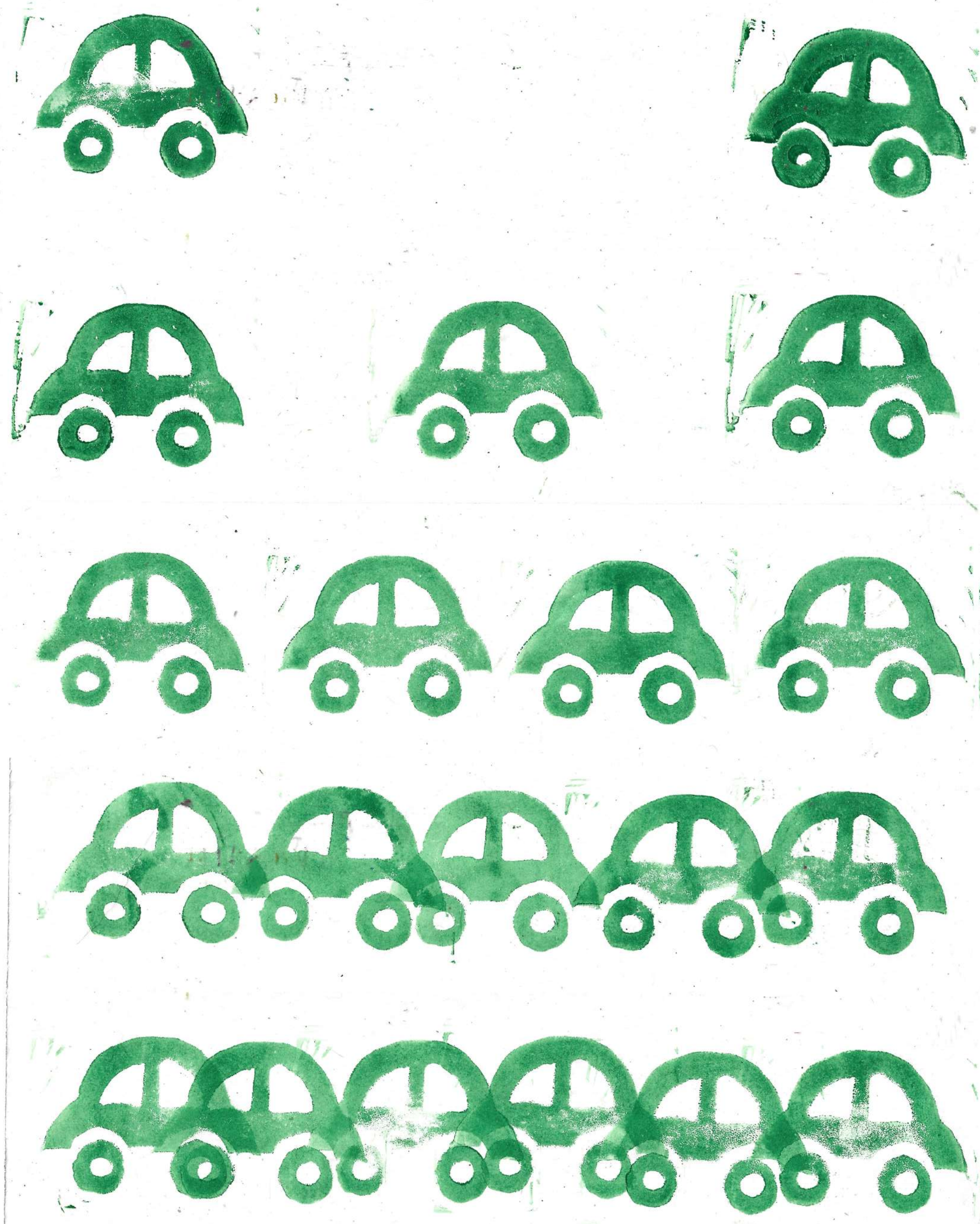


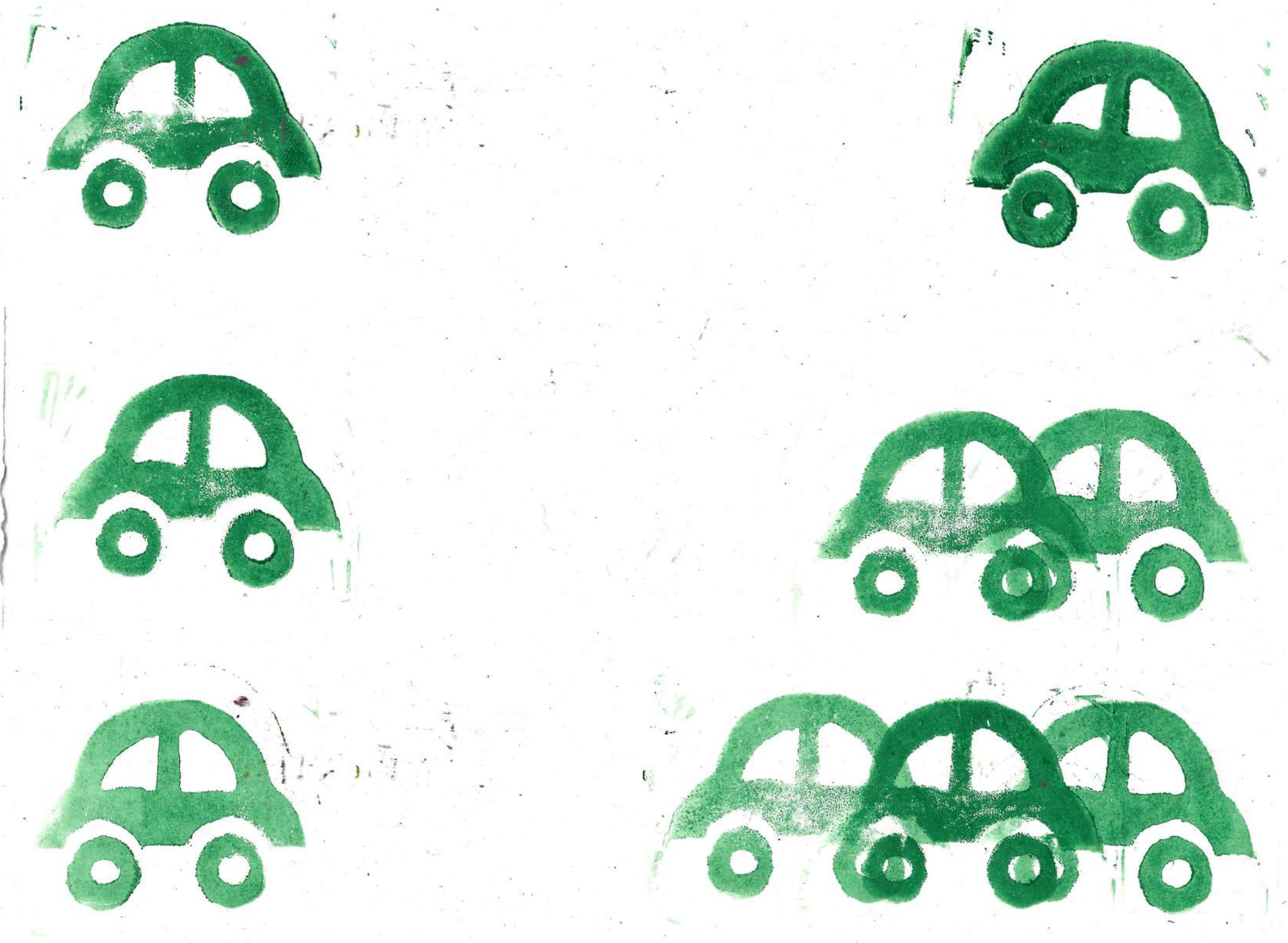




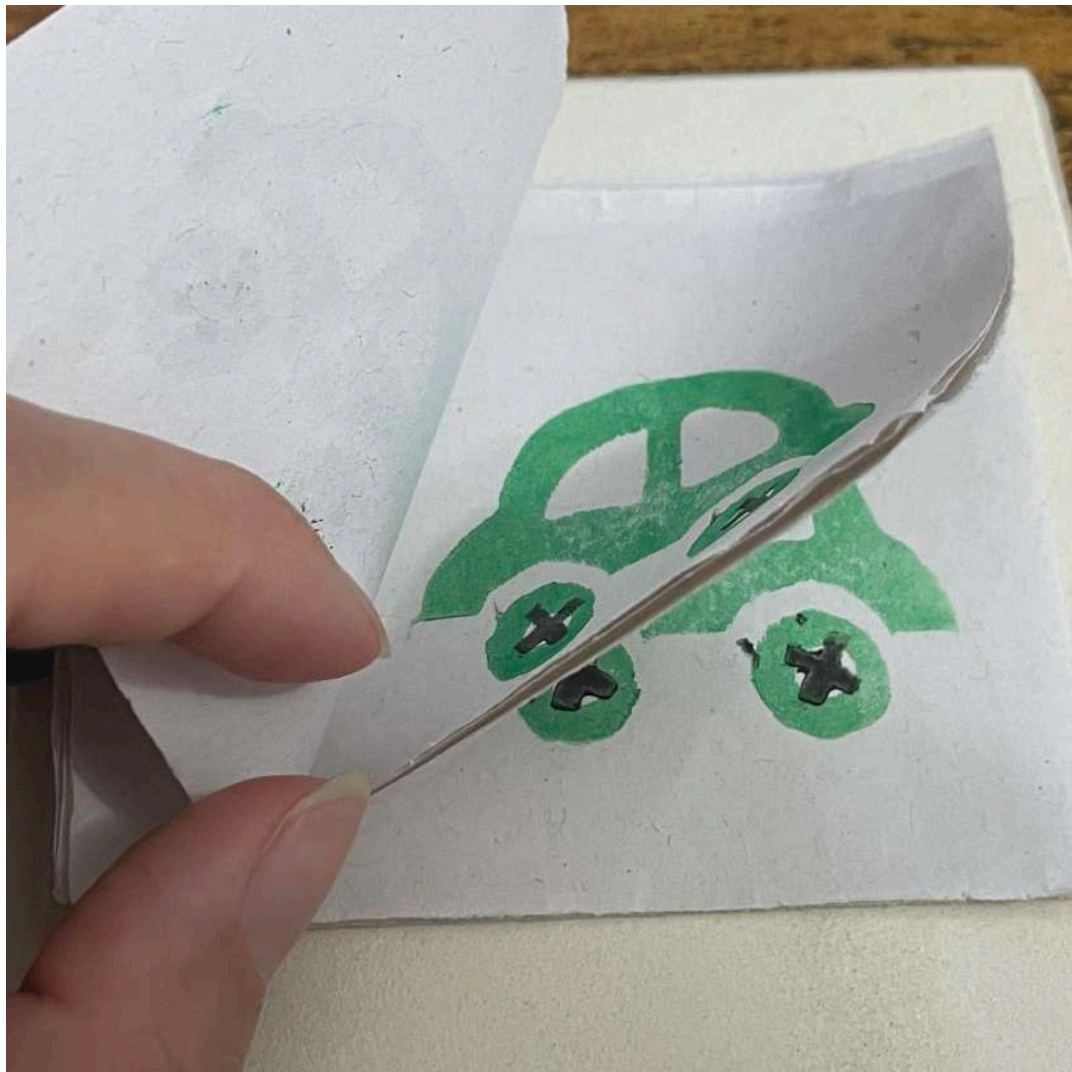


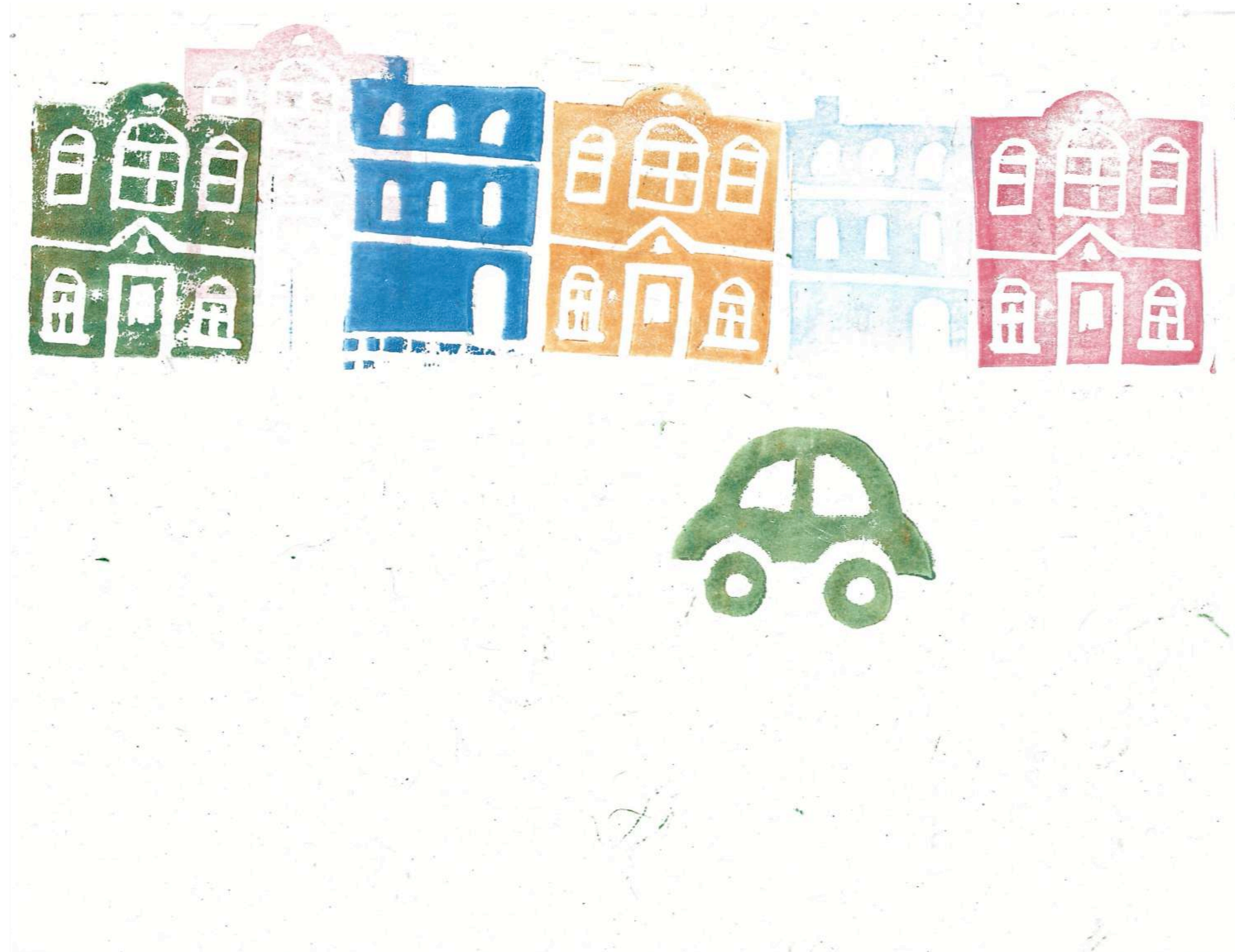
So I started over again, writing a plan and setting rules.











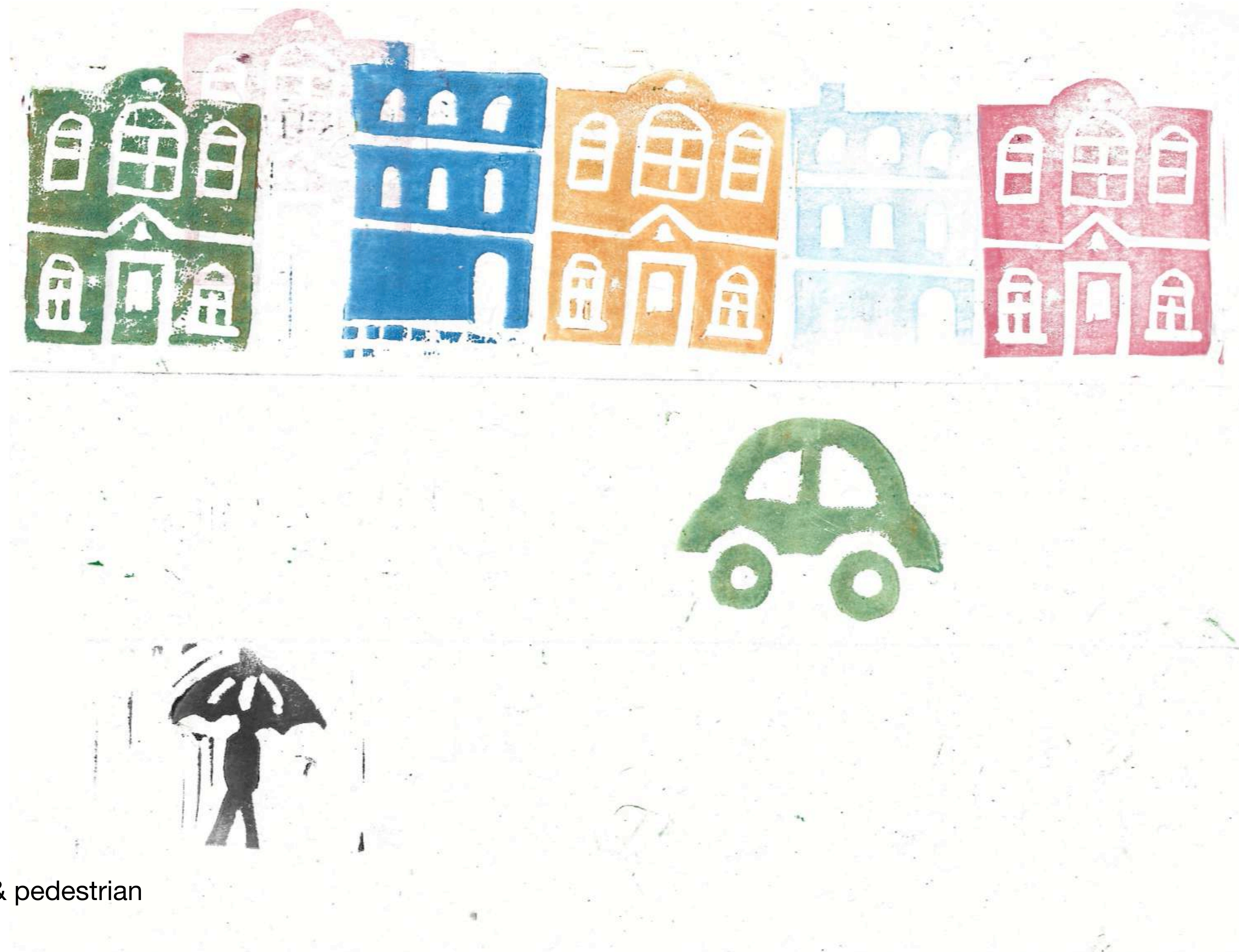
Rule 9a

Reference substance - houses
+ change the car's position



Rule 9b

Reference substance - houses
+ change the houses' position



Rule 9c

Reference substance - houses & pedestrian

Create different speeds